



14 Royal Avenue Burnside SA

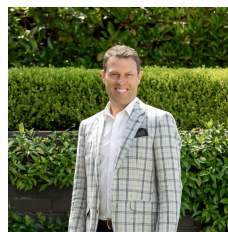
5 5 4

Crisp modern lines and clever use of materials such as glass and timber are featured throughout this contemporary family home.

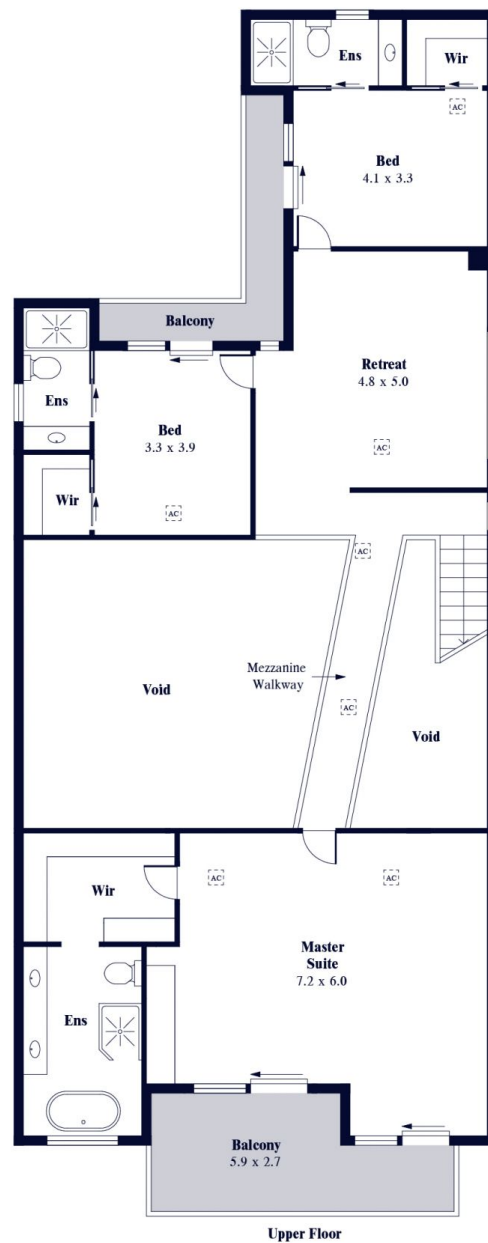
The entry leads you through past 2 downstairs bedrooms, one with ensuite bathroom and a glass sliding door opening to private courtyard. Stairs lead down to double garage, which has access to the gym/utility room with ample storage.

Double height rooms and a sky bridge linking the upstairs wings draw your attention sky-wards as you move through the centre of the home. A formal living room is showered in natural light from the ceiling height windows, with a gas fireplace sitting under the textured TV wall. The space showcases a bespoke timber, steel and glass staircase that ascends to the top floor.

Land Size : 751 sqm
View : <https://www.alexanderrealestate.com.au/sale/sa/eastern-suburbs/burnside/residential/house/7229498>



Steve Alexander
 0411 755 985



Internal - 464.7 SQM
 External - 99.9 SQM
 Total - 564.6 SQM

