



62 Marlborough Street Malvern SA

4 1 2

The home offers 4 bedrooms, family room, living and dining rooms, plus a large modern kitchen.

A wide frontage of 15.85m and depth of 48.77m approximately coupled with a valuable north facing rear aspect provide the ideal dimensions and orientation.

The gorgeous tree-lined Marlborough Street is within walking distance to Unley Road's shops and restaurants, schools, parks and offers easy access to the CBD.

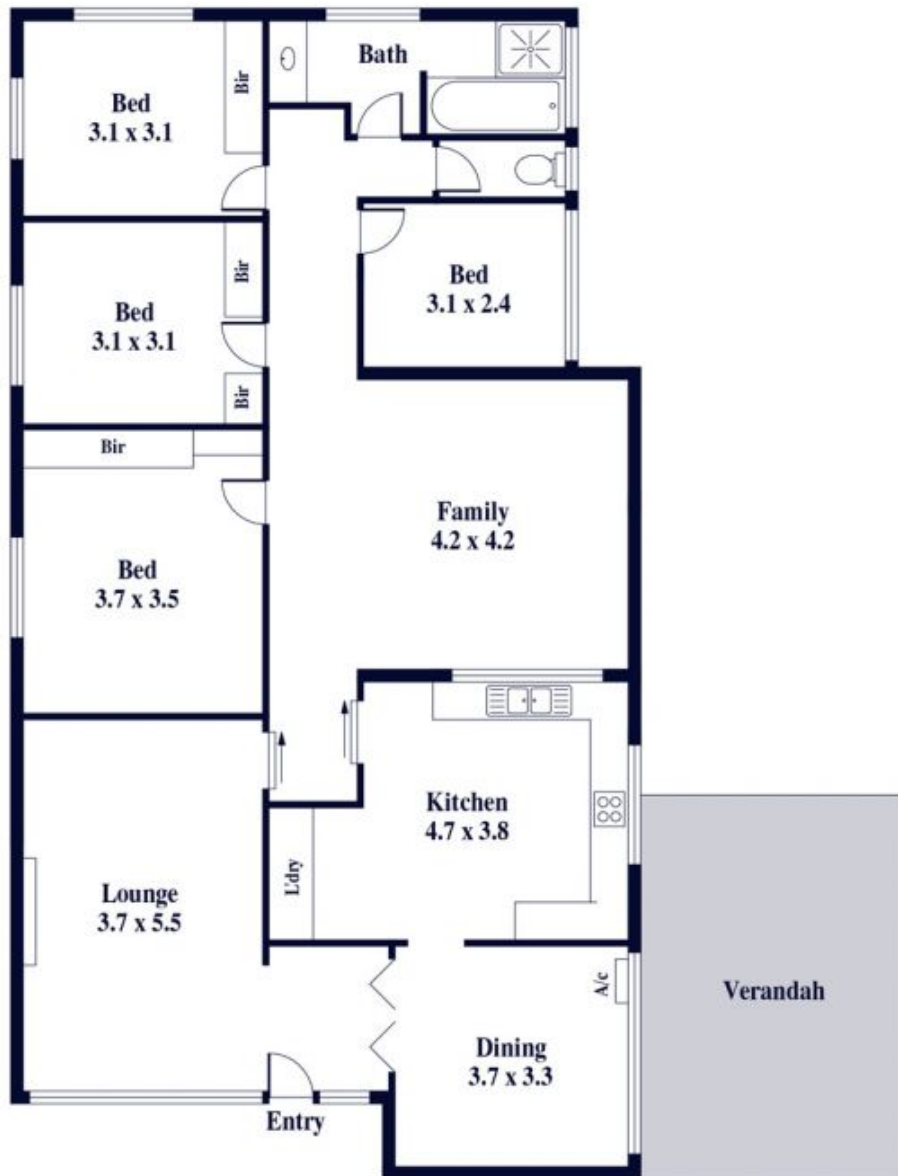
Land Size : 773 sqm

View : <https://www.alexanderrealestate.com.au/sale/sa/eastern-suburbs/malvern/residential/home/7233069>



Steve Alexander
0411 755 985

Property Details:



Internal - 155.5 SQM
External - 87.7 SQM
Total - 243.2 SQM

Floor Plan of Existing Home