

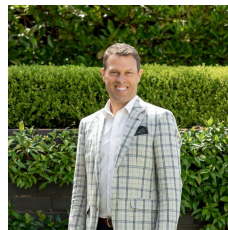
406 Greenhill Road Linden Park SA

4 🏠 3 🚗 2 🚗

Taking advantage of its proximity and walking distance to Burnside Village shopping, Linden Park Primary & Glenunga High School, this home is perfectly positioned for families looking to make the most of this brilliant eastern suburb location.

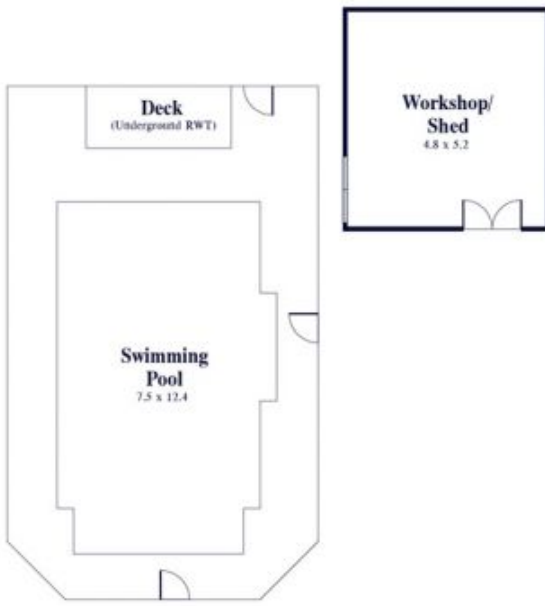
Land Size : 934 sqm
View : <https://www.alexanderrealestate.com.au/sale/sa/eastern-suburbs/linden-park/residential/house/7255167>

Built in 1927, this wonderful sandstone fronted Tudor is designed to cater for families with young children, teenagers or multi-generational shared living. Beautiful character features are evident as soon as you step into the formal entry with jarrah floors, decorative moulded ceilings and solid timber staircase.

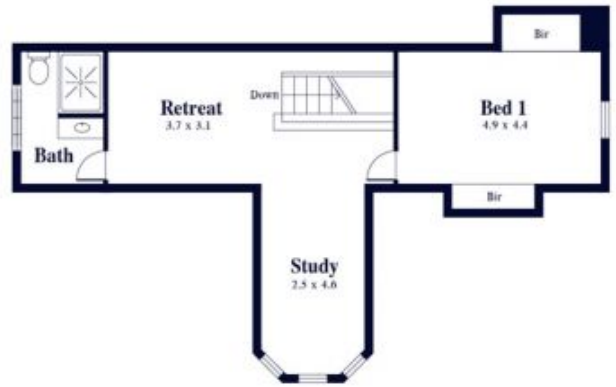


Steve Alexander
0411 755 985

The stunning bay window of the formal lounge draws in natural light and the sandstone clad decorative fireplace sits perfectly between the wainscoting of the neighbouring walls. Across the hall, through double leadlight French



Ground Floor



First Floor

Internal - 277.6 SQM
 External - 84.6 SQM
 Total - 362.2 SQM

