



19a Wattle Street Fullarton SA

4 2 2

Set on over 1022 m2 of valuable land this home is ripe for renovation/refurbishment or replacement (subject to necessary consents). Current council approval for demolition.

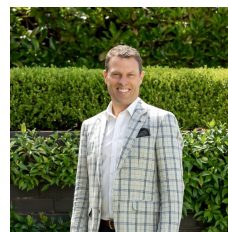
Providing an abundance of family accommodation currently, the home's character features including timber boards, fret work and high ceilings will appeal to the family wanting to expand on this wonderful architecture.

Completely liveable as-is, there is scope to add value in this prime location.

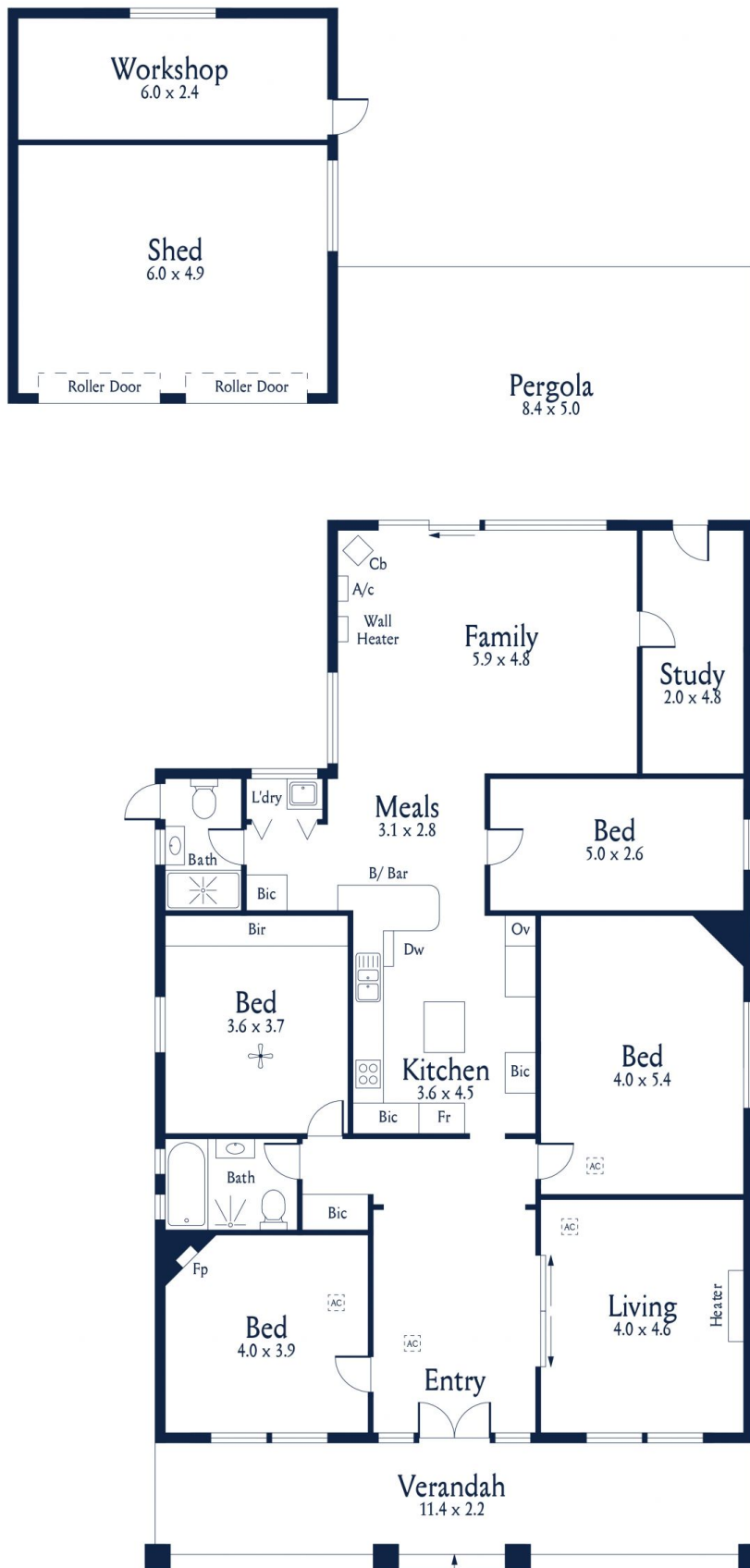
With its wide frontage of 15.97m (approx.) and depth of 64m (approx.), this allotment has ample space for an extension or pool. An incredible land-holding that will ignite your creativity with its countless possibilities.

Land Size : 1022 sqm

View : <https://www.alexanderrealestate.com.au/sale/sa/eastern-suburbs/fullarton/residential/home/7260111>

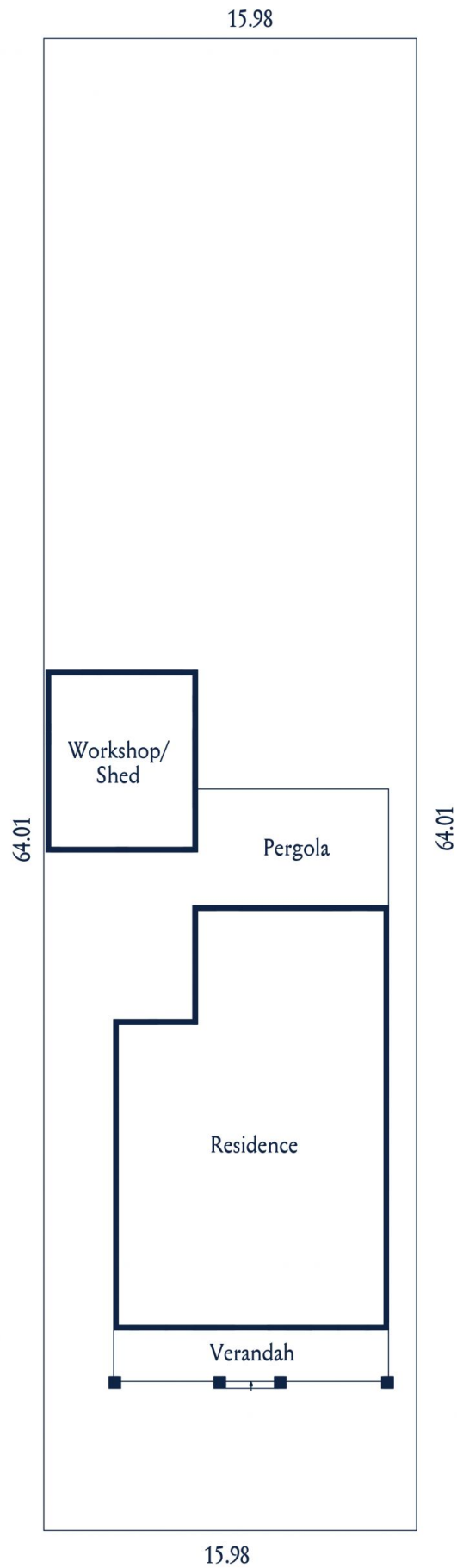


Steve Alexander
0411 755 985



19A Wattle Street, Fullarton

Internal - 212.0 SQM
 External - 113.3 SQM
 Total - 325.3 SQM



19A Wattle Street, Fullarton

Internal	- 212.0 SQM
External	- 193.0 SQM
Total	- 405.0 SQM