

16 George Street Torrens Park SA

6 3 4

This fantastic mid-century home is sited on a large allotment of approximately 1,164sqm with expanses of lawn and established gardens making it ideal for the modern family.

The home's flexible floorplan offers formal and informal areas, with a light-filled front living room that adjoins a dining area and kitchen which flows through to the open plan family zone at the rear of the home.

Offering excellent family accommodation with up to 6 bedrooms, study, 3 bathrooms. The master with access to the wide balcony taking in the spectacular elevated views.

Gorgeous alfresco entertaining space under the seasonal vines where you can sit and look over the large rear gardens, thriving veggie patch and watch the children shoot

Land Size : 1164 sqm

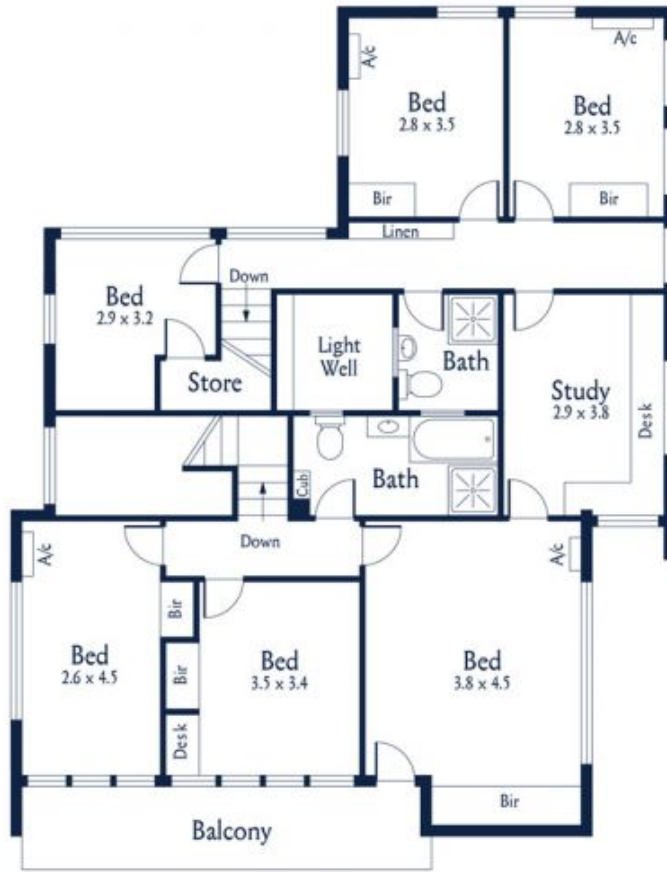
View : <https://www.alexanderrealestate.com.au/sale/sa/eastern-suburbs/torrens-park/residential/house/7260144>



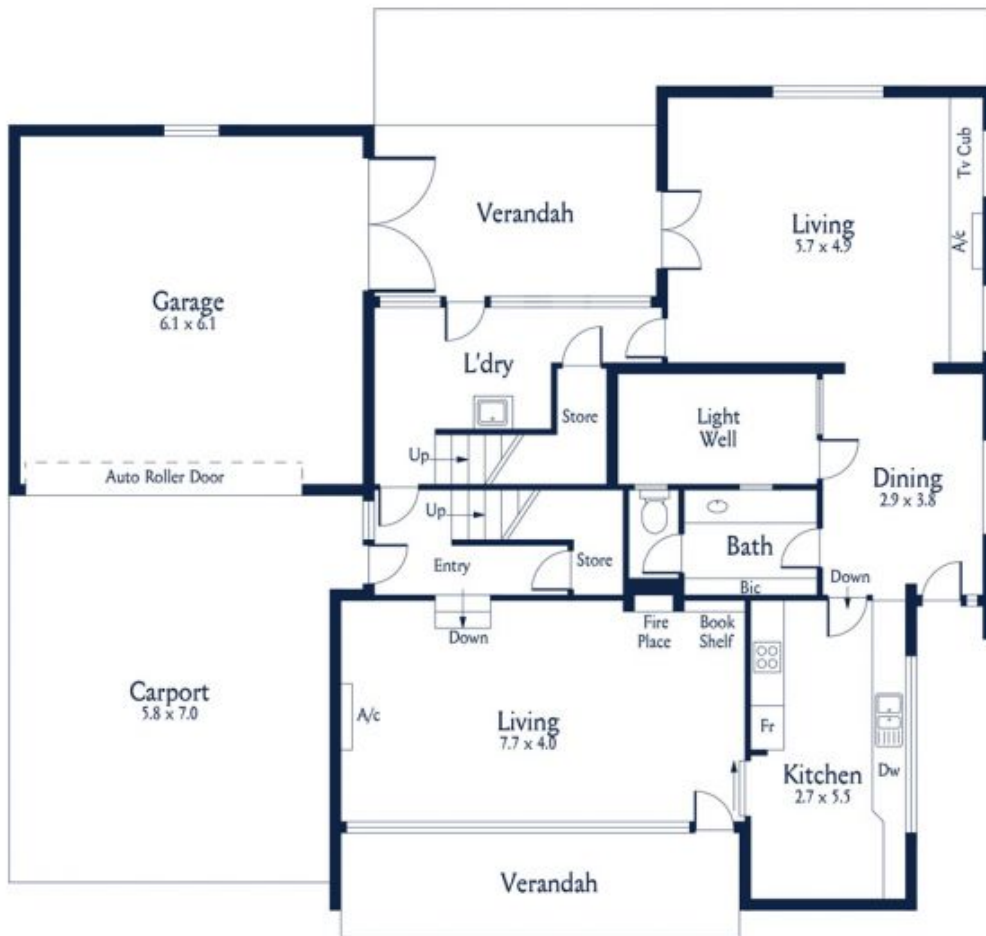
Steve Alexander
0411 755 985



Bonnie Whyte
0409 300 195



First Floor



Ground Floor


 Internal - 313.0 SQM
 External - 60.0 SQM
 Total - 373.0 SQM