



## 1 Godden Street Hawthorn SA

4 2 2

Situated in an exclusive cul-de-sac overlooking Godden Reserve and taking in an abundance of northern light is this delightful, architecturally-designed family home.

**View** : <https://www.alexanderrealestate.com.au/sale/sa/eastern-suburbs/hawthorn/residential/house/7260156>

Designed by renowned Adelaide architect Newell Platten, former partner of Dickson & Platten, in 1990, the home features examples of his modernist style with Mediterranean/ Tuscan influences including exposed timber and showcases robust internal elements such as hand-rendered textured walls and terracotta floor tiles.

The home's positioning on the 841sqm allotment means the large picture windows in each room have direct views to internal courtyards and take in an abundance of natural Northern light.

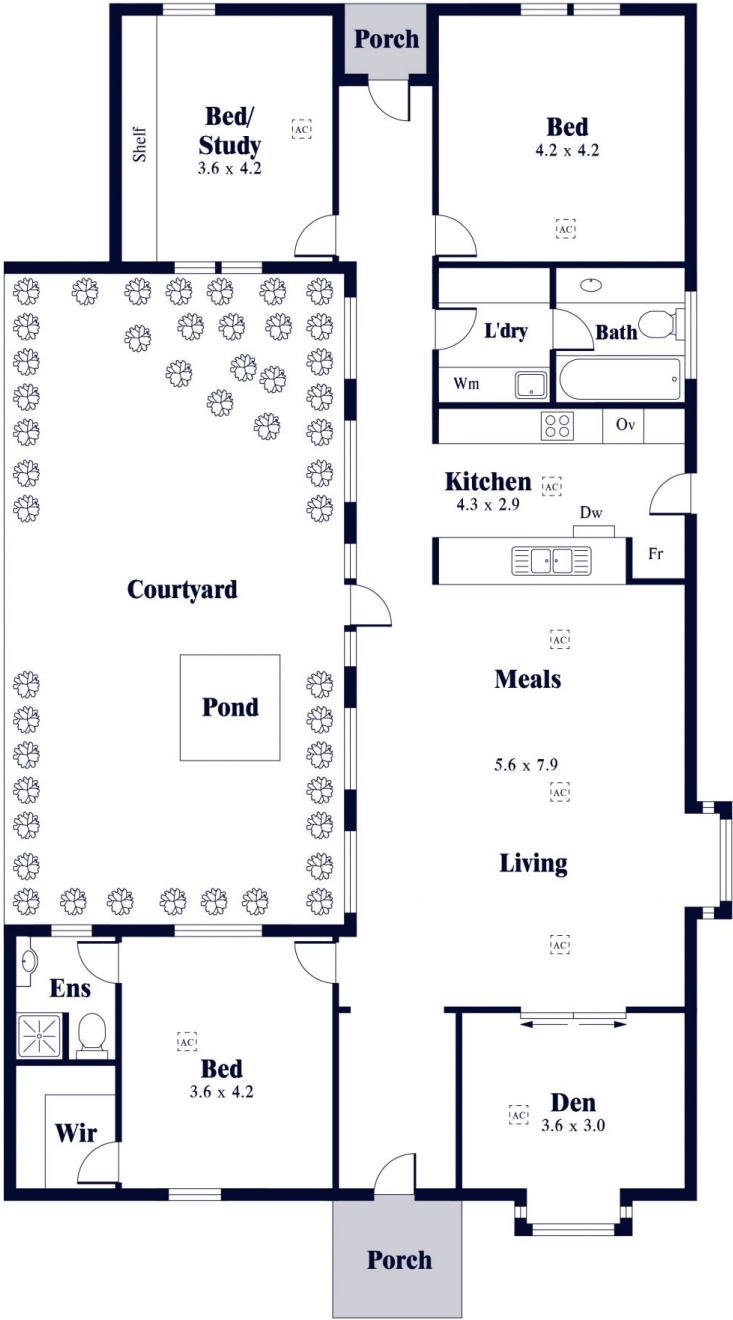
The manicured gardens and sun-drenched courtyards



**Steve Alexander**  
0411 755 985



**Bonnie Whyte**  
0409 300 195



Internal - 170.1 SQM  
 External - 67.1 SQM  
 Total - 237.2 SQM

