



## 10 Redounau Crescent Wattle Park SA

3 2 2

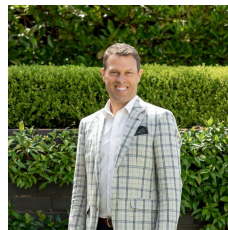
Land value opportunity with uninterrupted city views.

Set in a quiet cul-de-sac, the home was built in 1973 and offers buyers an exciting opportunity to renovate and make the most of the home's retro features, architectural elements and spectacular views on 620sqm approx.

Set over 3 levels, the home offers an abundance of accommodation and a flexible floorplan that will inspire a range of buyers.

Large picture windows take in the views from most living areas, while sliding glass doors open to decked balconies for alfresco entertaining. Raked ceilings, timber stairs, central decorative timber panelling and an abundance of other retro elements are eagerly awaiting the new owner to embrace and re-discover.

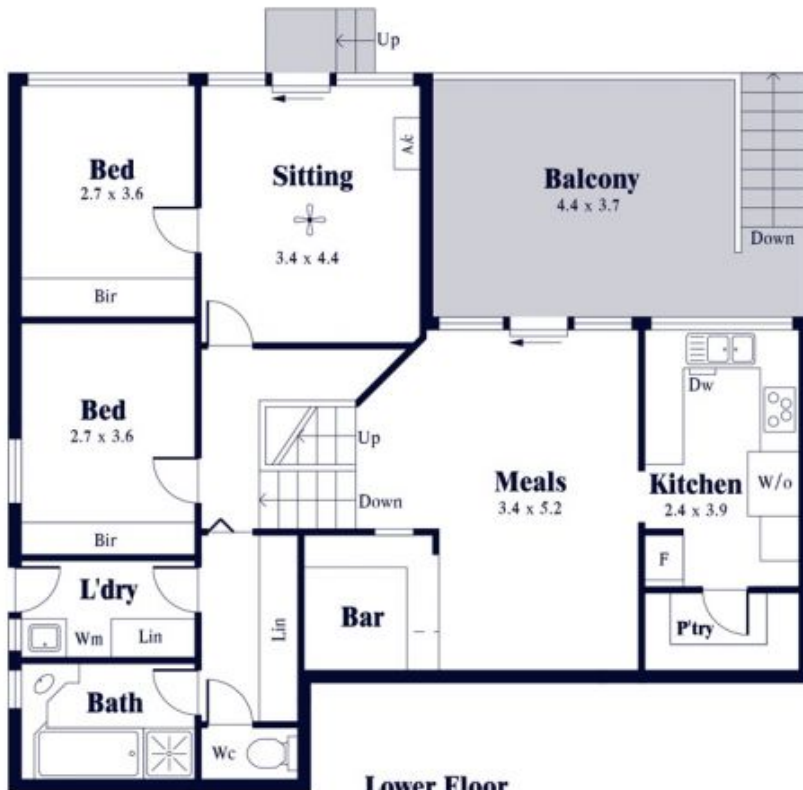
**Land Size** : 620 sqm  
**View** : <https://www.alexanderrealestate.com.au/sale/sa/eastern-suburbs/wattle-park/residential/house/7260198>



**Steve Alexander**  
0411 755 985



**Upper Floor**



**Lower Floor**

Internal - 194.4 SQM  
 External - 66.1 SQM  
 Total - 260.5 SQM

