



## 4 Orchard Avenue Everard Park SA

4 1 1

Red brick character home (Circa 1925) on 696qm with north-facing rear extension

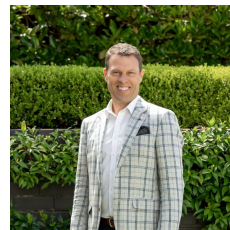
Behind the cream picket fence and native Australian garden, take the path to the front porch and explore this wonderful period family home.

The wide traditional hallway with high ceilings and decorative fretwork also features timber floorboards and extends the length of the original home.

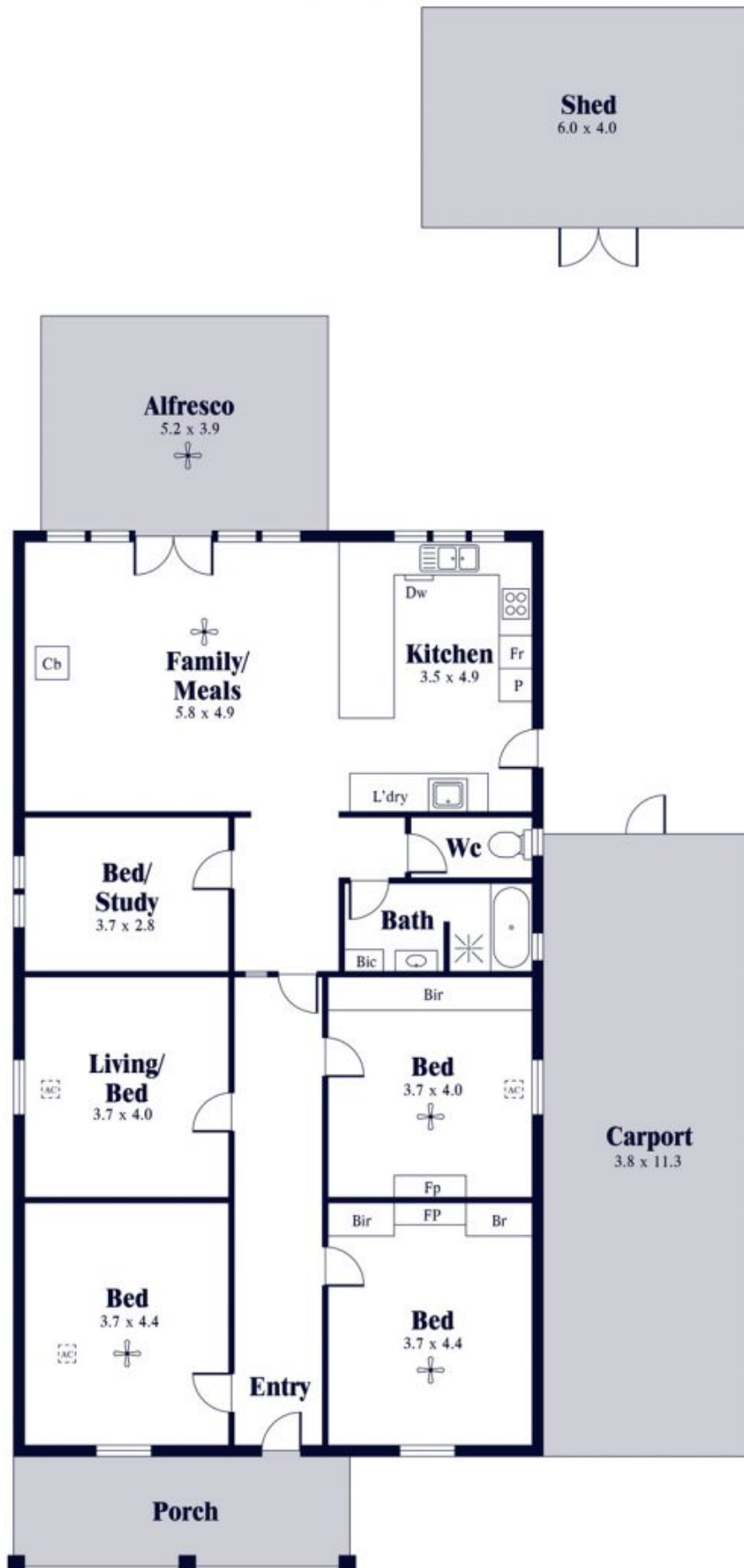
The flexible floorplan and character architecture allows for 4 bedrooms in the original part of the home plus study/playroom.

The home features a stunning modern bathroom with separate toilet, which has been finished with floor-to-ceiling

**Land Size** : 696 sqm  
**View** : <https://www.alexanderrealestate.com.au/sale/sa/western-beachside-suburbs/everard-park/residential/house/7260208>



**Steve Alexander**  
 0411 755 985



Internal - 161.3 SQM  
 External - 99.4 SQM  
 Total - 260.7 SQM

