



## 406 Glynburn Road Erindale SA

4 1 4

Charming Bluestone home, "Orchard Cottage" circa 1910, set on large 1,040 sqm allotment (approx) with ample opportunities.

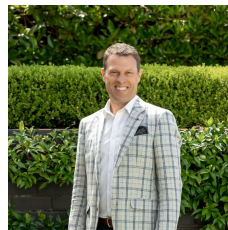
Owned by the same family for over 60 years and rich in history, a rare and exciting opportunity presents to the new owner to live in this comfortable and adaptable home in this enviable eastern suburb's location.

Gracefully poised overlooking the front garden, this charming solid Bluestone home captures the charm and character of its era with original ornate features including high ceilings, Baltic pine floorboards, spacious bedrooms with fireplaces and stunning lead light entry by E.F. Troy.

Walking through the front door, you are greeted with a wide entry hall with lofty ceilings. Four spacious bedrooms flow off the hallway all featuring ceiling fans, while three have original fireplaces. The rear of the home opens up to a large, bright and airy open plan living/dining area and

**Land Size** : 1040 sqm

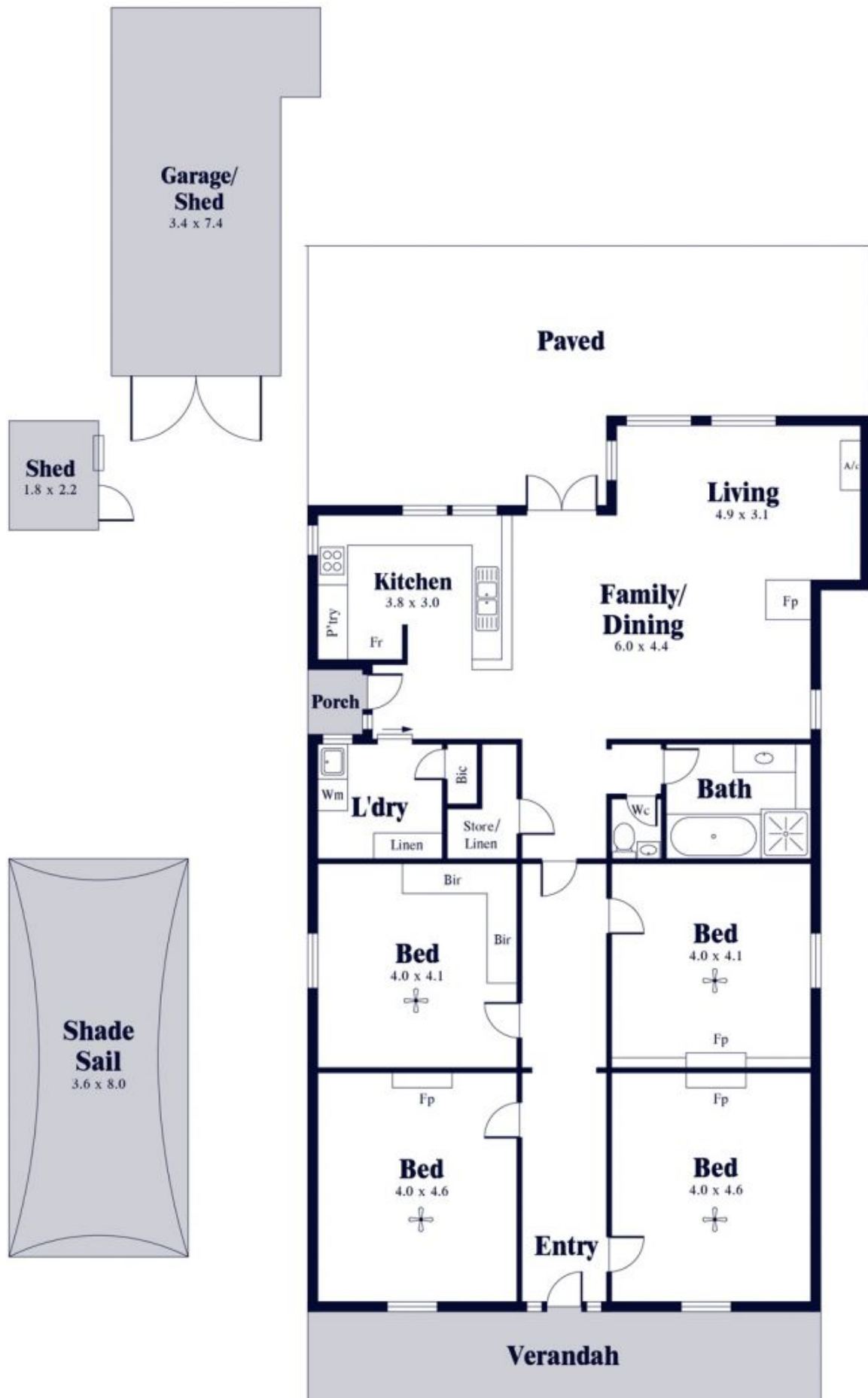
**View** : <https://www.alexanderrealestate.com.au/sale/sa/eastern-suburbs/erindale/residential/home/7260216>



**Steve Alexander**  
0411 755 985



**Bonnie Whyte**  
0409 300 195



Internal - 176.7 SQM  
 External - 77.9 SQM  
 Total - 254.6 SQM

