



6 Howard Court Glen Osmond SA

3 1 3

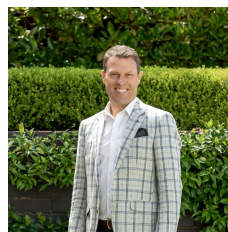
Zoned to Linden Park and Glen Osmond primary schools plus Glenunga International High school this low-maintenance colonial style family home is perfectly located on this elevated allotment. Easy-care home with opportunity to update should you wish.

The corner position includes a circular front driveway with double, side-by-side garaging, the home has an in-ground pool and private rear garden, perfect for busy families or down-sizers.

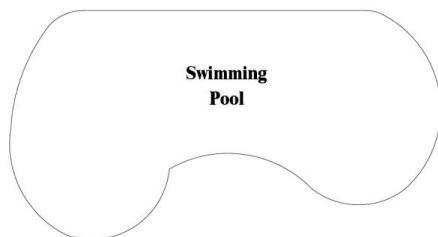
The front formal entry opens to a large sitting room with fireplace, pine floorboards and a large bay window. The adjacent dining room has double French doors leading the covered verandah, great for entertaining.

There is a modern kitchen, separate laundry and two-way

Land Size : 794 sqm
View : <https://www.alexanderrealestate.com.au/sale/sa/eastern-suburbs/glen-osmond/residential/house/7416409>



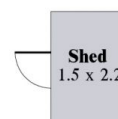
Steve Alexander
0411 755 985



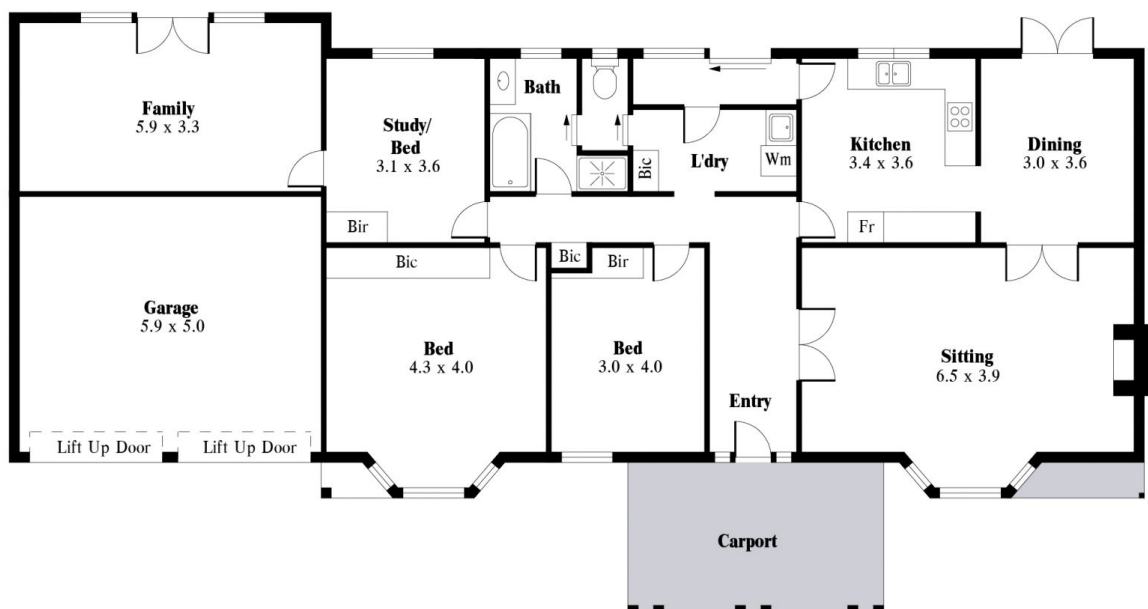
**Swimming
Pool**



Verandah



Shed
1.5 x 2.2



Internal - 187.3 SQM
External - 25.7 SQM
Total - 213.0 SQM

