



24 Mornington Road Unley SA

2 1 2

Behind a white-picket fence this perfectly positioned home has a generous rear garden and all the lifestyle advantages of its premium location.

Established in 1915 this character home has a fresh and neutral palette. Step inside to lofty ceilings and beautiful NZ kauri floorboards adorning a wide hallway - the ideal gallery for your art.

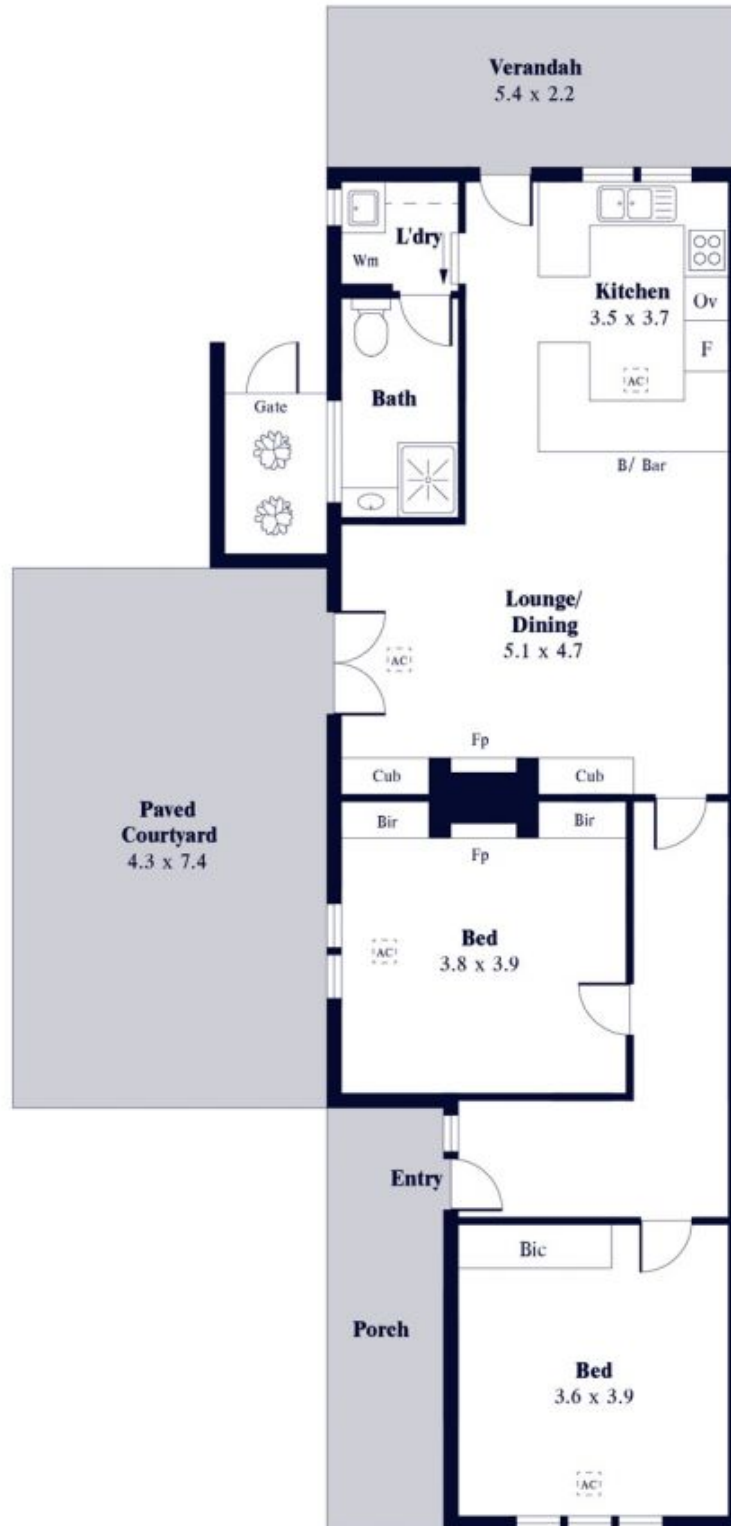
The home offers a flexible floorplan for modern living with 2 large bedrooms, both with built-in robes, central living with French doors to alfresco entertaining, updated open plan living space and a renovated light-filled bathroom.

On offer outside is the expansive rear garden with fabulous scope to extend (subject to all necessary consents). Plus, the wide allotment allows for beautiful side gardens with

Price : \$ 1,120,000
Land Size : 409 sqm
View : <https://www.alexanderrealestate.com.au/sale/sa/eastern-suburbs/unley/residential/house/7471210>



Bonnie Whyte
0409 300 195



Internal - 97.3 SQM
 External - 61.1 SQM
 Total - 158.4 SQM