



3a The Crescent Marryatville SA

5 🚗 2 🚗 2 🚗

Rare opportunity to secure a private and discreet sanctuary that captures the essence of hills living in the city.

Behind the black gate enter the substantial solid brick home, originally constructed in 1987 and expertly renovated by Outset Design. This home features a fabulous kitchen and family room connecting to an extraordinary outdoor entertaining area surrounded by gorgeous gardens and birdlife.

It also has a stylish and extended family friendly layout with two distinct wings and private areas for adults and children which meet in the central kitchen and living room.

The spacious main bedroom boasts a wall of built-in

[For full version visit the website](#)

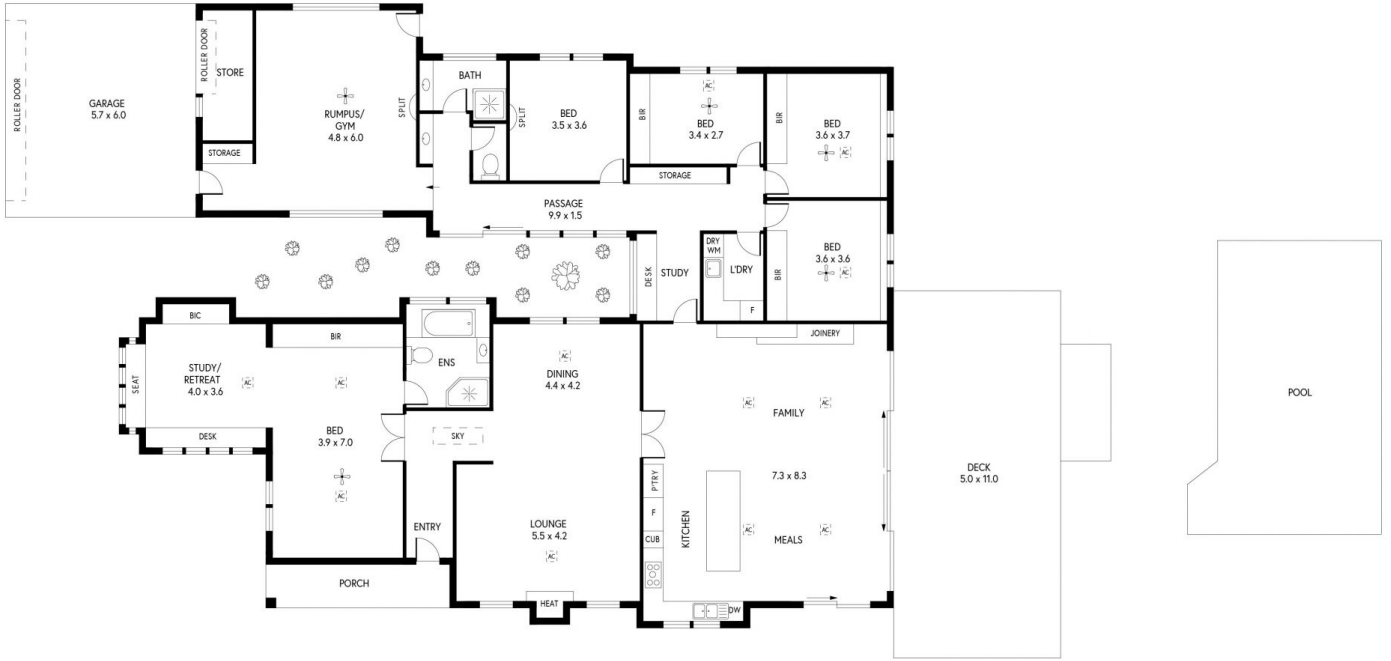
Type : House
Land Size : 1365 sqm
View : <https://www.alexanderrealestate.com.au/sale/sa/eastern-suburbs/marryatville/residential/house/7545305>



Penny Riggs
0439669965



Steve Alexander
0411 755 985



3A THE CRESCENT, MARRYATVILLE

	INTERNAL	- 316.4 SQM
	EXTERNAL	- 96.4 SQM
	TOTAL	- 412.8 SQM

PRODUCED BY CLIQUECREATIVE