



## 5 Minnow Drive Glenalta SA

3 2 2

Impressively positioned among the natives in this foothill location, this charming mid-century inspired family home offers idyllic resort style living in the serenity of foothills setting on a peaceful allotment of approximately 1,105 sqm.

Entering the home there is an immediate feel of space and warm ambiance, with soaring vaulted ceilings, picture windows and classic timber panels. The living space creates an open sense of connectedness whilst offering a sense of privacy. The gourmet kitchen opens onto the casual dining area and enjoys a lovely view of the front garden.

Cleverly designed with master bedroom to the front of the home, it provides privacy and separation to the other two bedrooms which are located towards the rear.

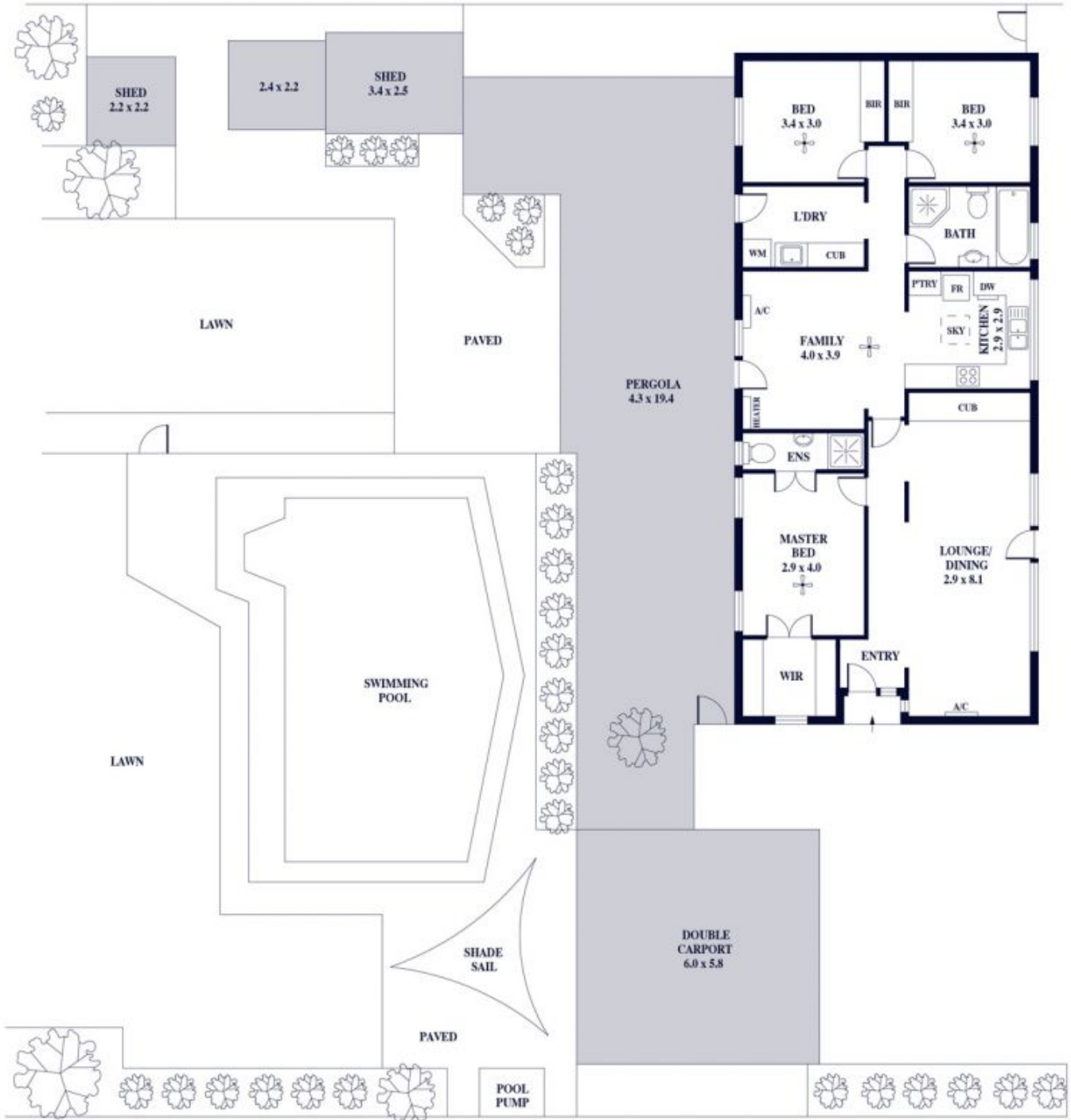
**Land Size** : 1105 sqm  
**View** : <https://www.alexanderrealestate.com.au/sale/sa/south-south-east-suburbs/glenalta/residential/house/7592057>



**Tim Thredgold**  
0418 817 407



**Megan Thredgold**  
0417 802 997



Internal - 123.5 SQM  
 External - 139.4 SQM  
 Total - 262.9 SQM

