



## 2 Salisbury Terrace Collinswood SA

5 2 2

Rarely does a home with such rich history and unique Victorian architectural characteristics, including a circular turret tower become available for sale. Built in 1905 by the renowned Adelaide architect Alfred Wells, his distinct love of the Queen Anne period inspired his turret design, and he used a mixture of sandstone, bluestone and red brick to create a unique and distinctive facade. Wells was famous for designing landmark South Australian buildings such as Adelaide Arcade, the Women's & Children's Hospital and the Norwood Town Hall.

Situated on a corner allotment, this pocket of Collinswood is filled with grand and elegant local heritage-listed homes, making it one of the most enviable locations.

The home's large grand formal rooms, distinct traditional period features and bespoke interior designs, such as the

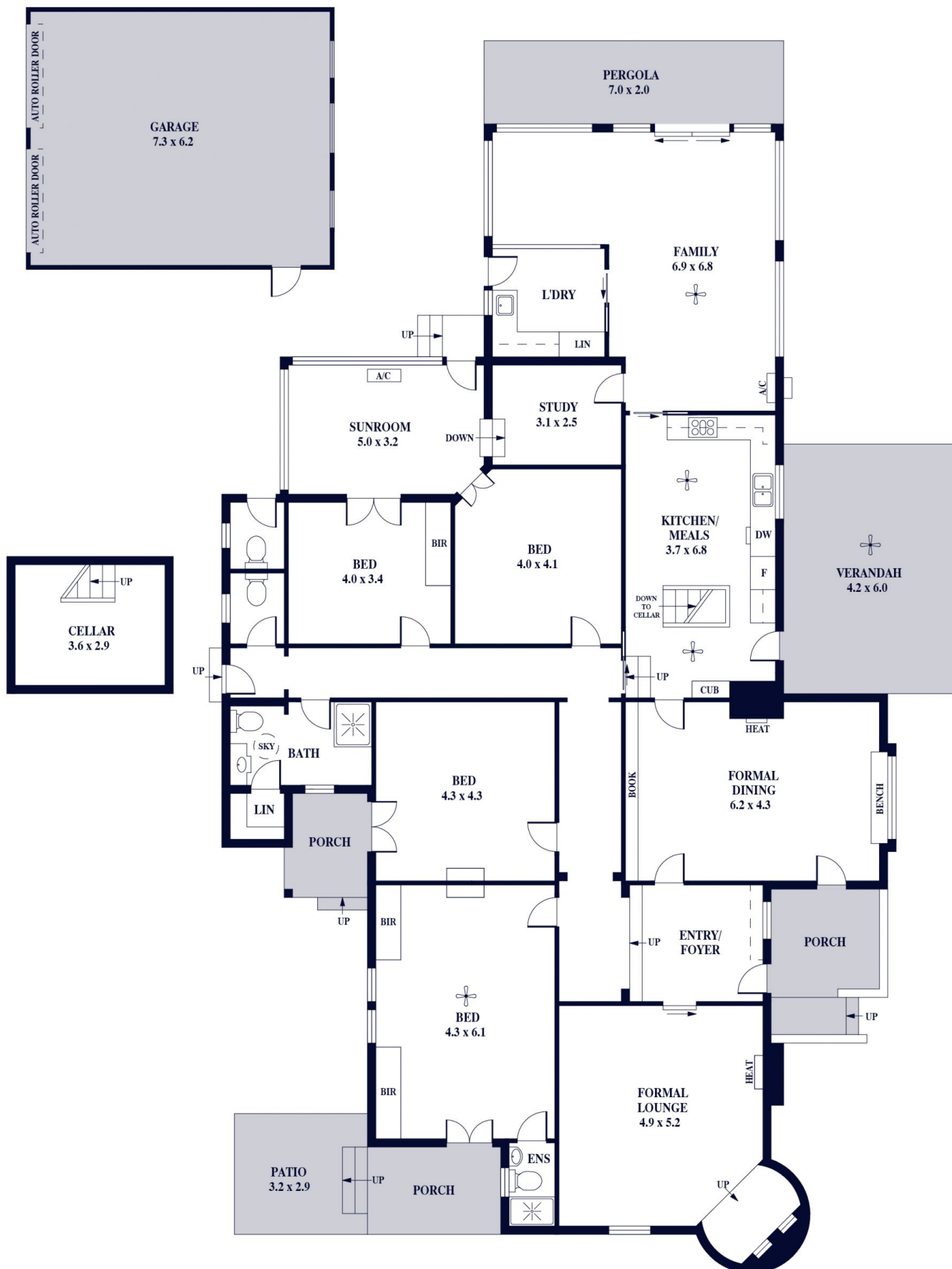
**Land Size** : 1109 sqm  
**View** : <https://www.alexanderrealestate.com.au/sale/sa/north-north-east-suburbs/collinswood/residential/house/7600690>



**Steve Alexander**  
0411 755 985



**Penny Riggs**  
0439669965



Internal - 286.0 SQM  
 External - 115.0 SQM  
 Total - 401.0 SQM

