






91 East Parkway Lightsview SA

3  2  2 

Boasting contemporary design and top-tier features, this residence is a haven of comfort and style.

Upon entry, the study offers an ideal workspace, perfect for remote work and filled with natural light. The kitchen features gold tapware, a pendant light illuminating the island bench, elegant Caesarstone benchtops, a gas cooktop with five burners, and a generous 900mm electric oven. A generous butler's pantry provides a second sink, dishwasher, and room for a double door fridge.

The open-plan dining and living room seamlessly extends to an outdoor entertaining area with decking, crazy paving, and a breeze block wall. A ceiling fan and gas point and plumbing for an outdoor kitchen enhance the space.

A powder room downstairs caters to guests, while the

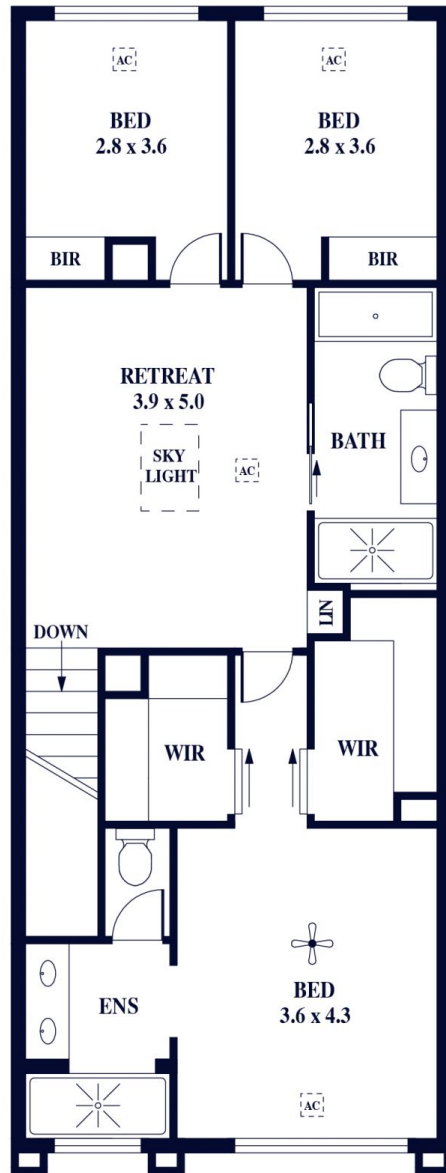
Land Size : 165 sqm
View : <https://www.alexanderrealestate.com.au/sale/sa/north-north-east-suburbs/lightsview/residential/house/7716281>



Isabela Klemich
0405 412 427



GROUND FLOOR



UPPER FLOOR

Internal - 171.6 SQM
 External - 57.7 SQM
 Total - 229.3 SQM

