

11 Sturt Place Beaumont SA

3 2 2

Nestled behind a natural garden, this mid-century modern home boasts elevated views across to the city and beyond. Its prime location offers fantastic development potential in the serene surroundings of Beaumont Common.

This property, spanning 829 sqm, awaits the creative touch to give this property a new life.

The backyard is an oasis, complete with a landscaped garden and a Tuscan-style pool surrounded by vibrant spring-flowering bulbs and lush tropical foliage. There's even ample space to cultivate your own garden.

Situated in a highly desirable location with Beaumont Common as your front yard, this property falls within the catchment zones of Linden Park Primary, Burnside Primary, and Glenunga High School. It's also just moments

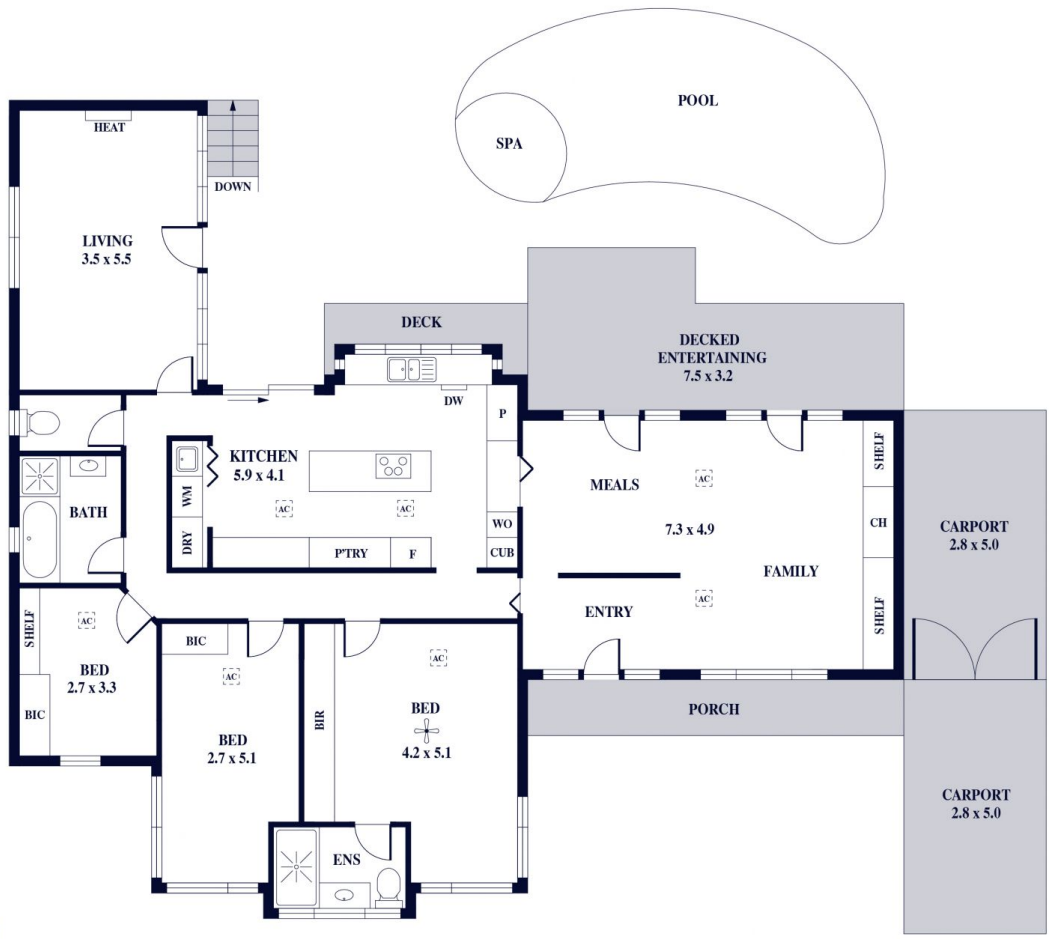
Land Size : 829 sqm
View : <https://www.alexanderrealestate.com.au/sale/sa/eastern-suburbs/beaumont/residential/house/7745764>



Tim Thredgold
0418 817 407



Megan Thredgold
0417 802 997



Internal - 160.3 SQM
 External - 59.8 SQM
 Total - 220.1 SQM

