



28a Sheldon Street Norwood SA

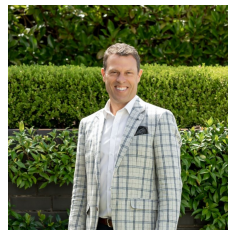
2 1 2

Architecturally designed, the home's appealing feature is the ability to draw light from various sources by cleverly positioned custom-made glass panelled ceiling/windows and an internal courtyard garden providing a tranquil sanctuary, with multiple windows allowing light to filter into the home.

Secure entry from the front pedestrian gate leads you past the paved carport to the front door. Upon entry, your eye is directed skyward to the double-height entrance and natural light cascading from the top floor. Moving forward, you enter a versatile living room that could easily be used as a home office.

The central courtyard atrium provides excellent ventilation and a charming, relaxing place while savouring your favourite beverage. Sharing the courtyard's light is the

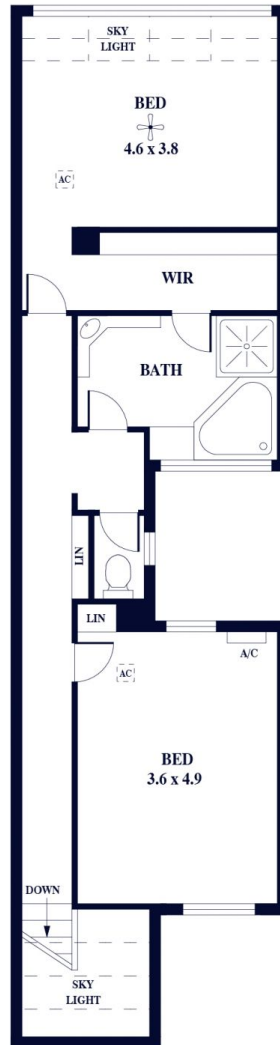
Land Size : 198 sqm
View : <https://www.alexanderrealestate.com.au/sale/sa/eastern-suburbs/norwood/residential/townhouse/7776697>



Steve Alexander
0411 755 985



LOWER LEVEL



UPPER LEVEL

Internal - 158.9 SQM
 External - 52.3 SQM
 Total - 211.2 SQM

