



## 29 Keyes Street Linden Park SA

3  1  2 

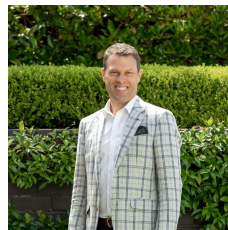
Nestled on a picturesque, tree-lined street in the highly coveted suburb of Linden Park, this charming, solid brick family residence offers an idyllic setting on a spacious 836sqm of land. With an impressive 18.29m frontage, this property promises potential renovation, expansion, or rebuilding (subject to all necessary consents), making it a truly versatile investment.

Approaching the residence, a delightful cottage garden peeks through the inviting timber fence. The front entrance features a welcoming verandah/porch. Once inside, the entrance hallway showcases polished floorboards, creating a warm and inviting ambience that sets the tone for the entire home.

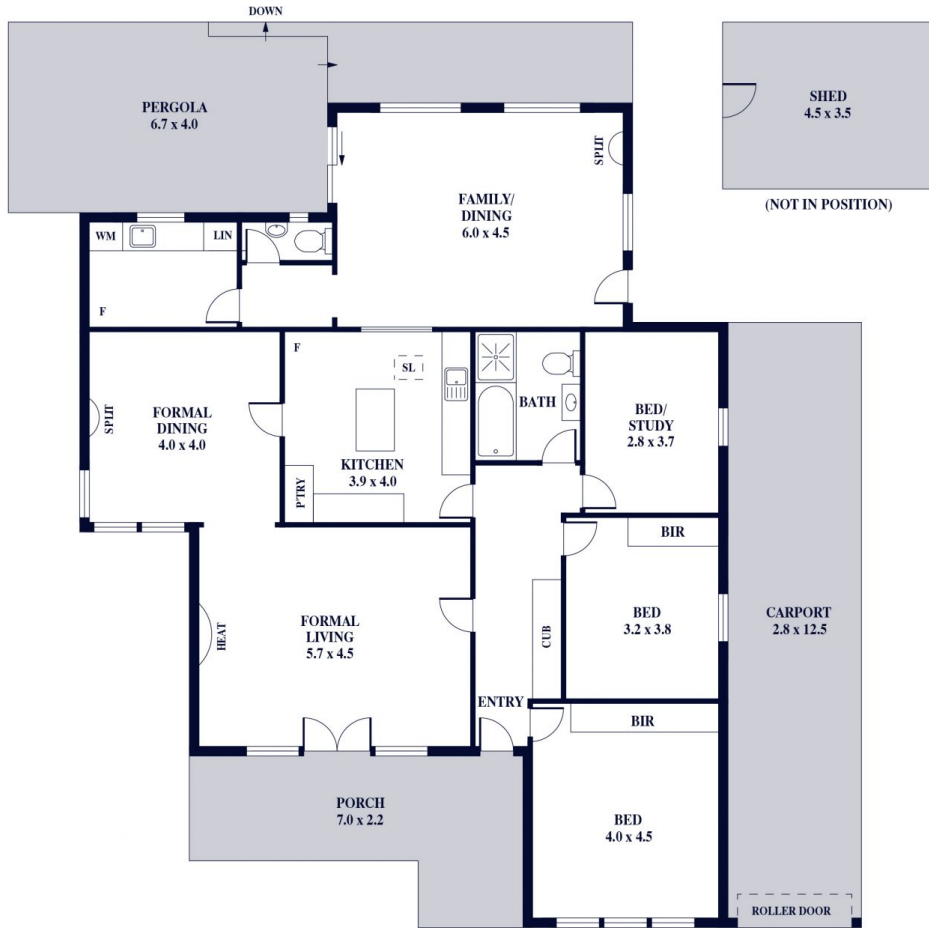
The spacious front formal lounge exudes timeless grace, featuring large colonial windows that flood the room with

**Land Size** : 836 sqm

**View** : <https://www.alexanderrealestate.com.au/sale/sa/eastern-suburbs/linden-park/residential/house/7818303>



**Steve Alexander**  
0411 755 985



Internal - 169.8 SQM  
 External - 106.9 SQM  
 Total - 276.7 SQM

