



## 45 Walsh Avenue St Marys SA

4 2 2

Please register your interest in attending the open inspection by email. Open times are subject to change at short notice so only those registering will be notified.

Sure to impress, this spacious home is brilliantly located to both the City and nearby Flinders University and Flinders Hospital. Public transport is available a stone's throw away and excellent shopping facilities in Pasadena Shopping Centre and Westfield Marion are close by. For recreation, Adelaide's southern beaches are a short drive away and closer by you'll find the Shepherds Hill Recreation Park - great for hiking and the Thurles Street Reserve and Playground.

This fabulous, light filled home features:-

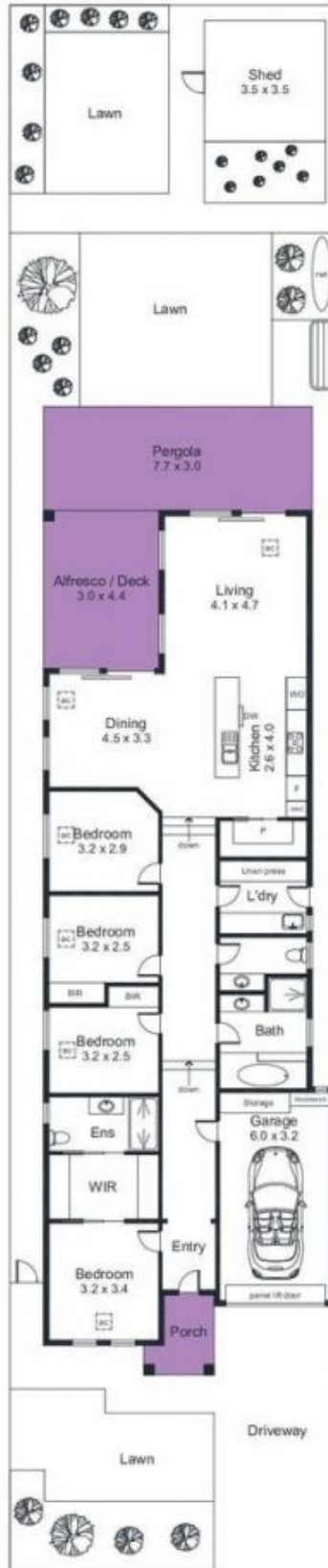
- master bedroom with huge walk in robe and ensuite

**Price** : \$750 pw

**View** : <https://www.alexanderrealestate.com.au/lease/sa/south-south-east-suburbs/st-marys/residential/house/7938731>



**Virginia Saler**  
0477 611 534



Area (Estimate only)	
Living	140.7 m <sup>2</sup>
Pergola	23.2 m <sup>2</sup>
Garage	19.3 m <sup>2</sup>
Alfresco / Deck	15.2 m <sup>2</sup>
Shed	12.3 m <sup>2</sup>
Porch	3.9 m <sup>2</sup>
<b>Total</b>	<b>214.6 m<sup>2</sup></b>

For illustrative purposes only.  
All measurements are approximate