

15 Seaton Avenue Hazelwood Park SA

3 2 2

Masterpiece of modern elegance, opulence and luxury for family living

Custom designed and built by G & R Homes to the highest standard, this 2018 executive home offering over 300 sqm of accommodation on over 700 sqm of land is the combination of opulence, luxury and every imagination of family practicality to deliver the ultimate lifestyle opportunity.

Featuring sensational proportions, classic design, bespoke finishes, meticulous attention to details and sun-drenched spaces, this home is a masterpiece of modern elegance. Upon entering, the striking reception hall is highlighted by stunning floorboards and soaring ceilings and introduces an elegant sitting room overlooking the gorgeous front garden. The grandeur flows through gallery-like interior to

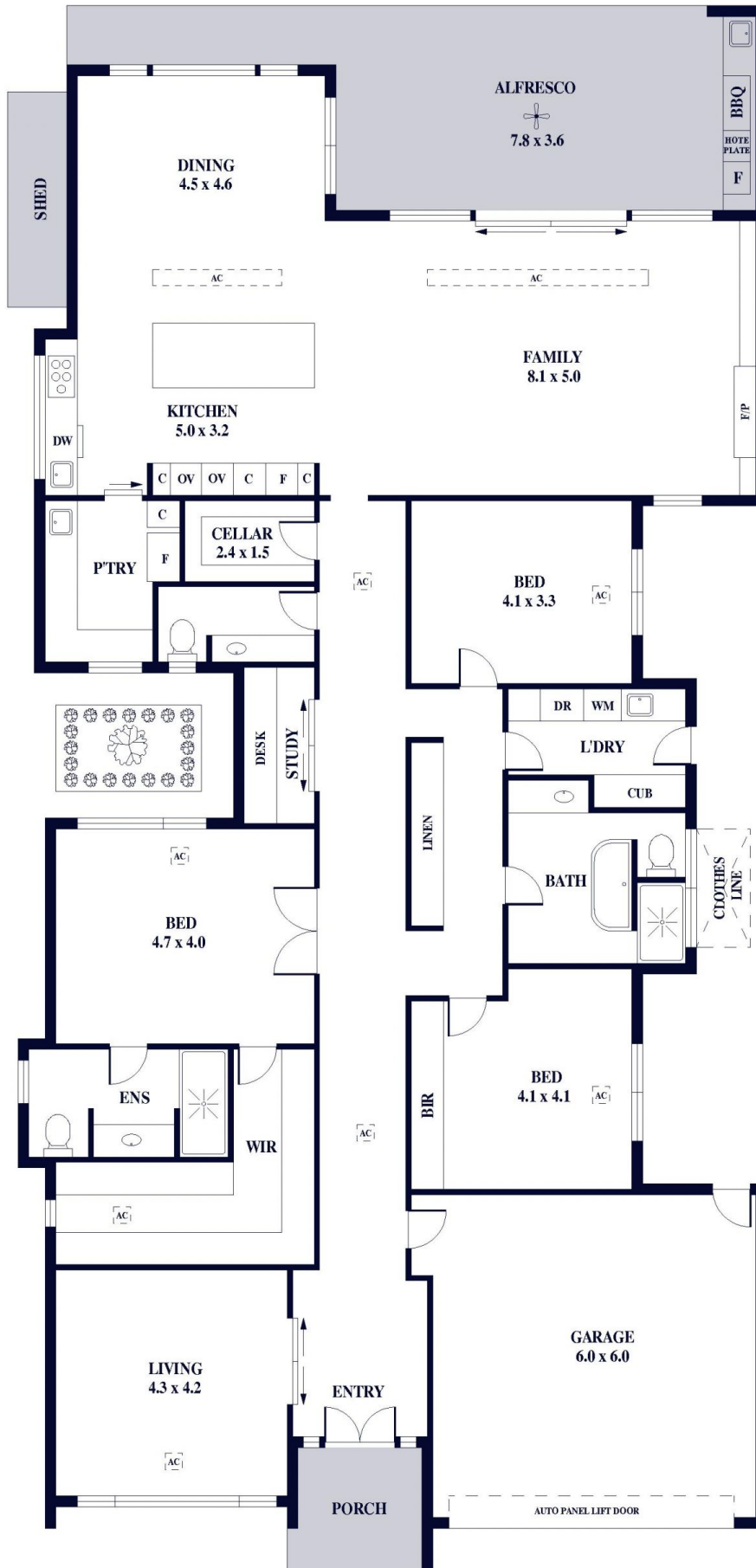
Land Size : 727 sqm
View : <https://www.alexanderrealestate.com.au/sale/sa/eastern-suburbs/hazelwood-park/residential/house/7981137>



Tim Thredgold
0418 817 407



Steve Alexander
0411 755 985



Internal - 305.1 SQM
 External - 45.8 SQM
 Total - 350.9 SQM

