



22 Kyre Avenue Kingswood SA

4 1 4

The first time presented to the market in over 55 years, this 1910 Villa stands ready to embrace new beginnings and create new memories with its future owners.

Set on a generous 799sqm allotment (approx.), the home currently comprises of up to four bedrooms, 1 bathroom, spacious eat-in kitchen, and an expansive backyard. This layout provides endless potential for those with a vision for renovation and redesign.

Kingswood is a prestigious suburb renowned for its enviable lifestyle and tree lined streets. It boasts convenient access to a wide array of amenities, including Mitcham Shopping Centre, The Edinburgh Hotel, Stamps Café, public transport, and 10 minutes to the city.

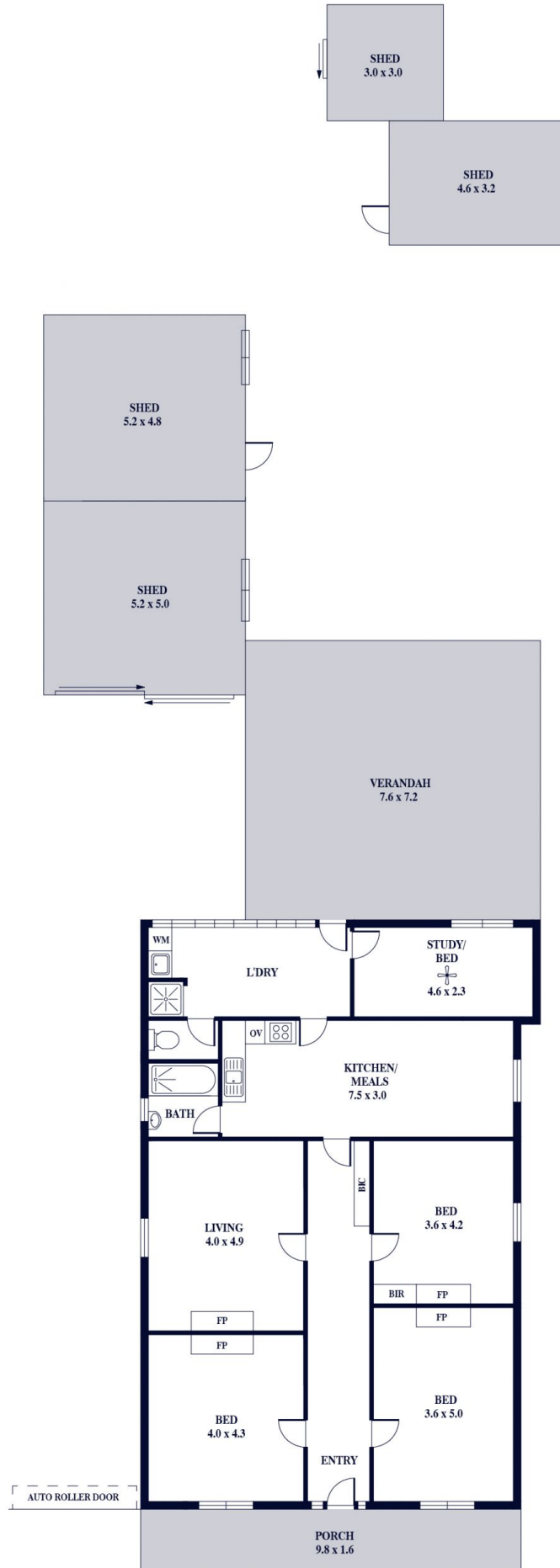
Surrounded by excellent schooling including Scotch and

Land Size : 799 sqm

View : <https://www.alexanderrealestate.com.au/sale/sa/eastern-suburbs/kingswood/residential/house/7983696>



Bonnie Whyte
0409 300 195



Internal - 150.3 SQM
 External - 145.1 SQM
 Total - 295.4 SQM

