



4 Victoria Avenue Unley Park SA

5 🏠 2 🚗 2 🚗

Please phone for an appointment

Spanning a breathtaking 4,609sqm (approx.) across two titles, this grand 1920s mansion boasts manicured gardens, a north/south grass tennis court, a serene gazebo, a fully self-contained coach house and a sparkling inground pool and spa.

Meticulously maintained and restored, this property exudes enduring charm. As you step inside, you're greeted by a blend of sandstone and red-brick accents leading to a grand hall with lofty ceilings and elegant chandeliers. The formal lounge and dining areas offer ample space for gatherings and entertaining for various occasions.

The modern chef's kitchen and adjoining casual dining area create a delightful social hub full of natural light that is

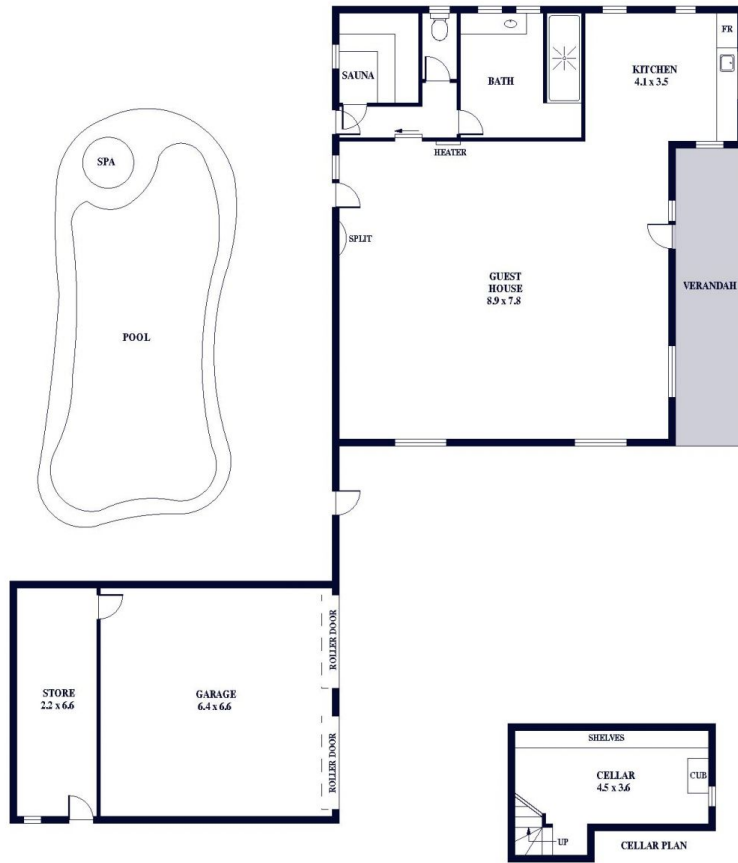
Land Size : 4609 sqm
View : <https://www.alexanderrealestate.com.au/sale/sa/eastern-suburbs/unley-park/residential/house/8004937>



Penny Riggs
0439669965



Isabela Klemich
0405 412 427



Internal - 340.0 SQM
 External - 300.6 SQM
 Total - 640.6 SQM



