



5 Woodhouse Crescent Wattle Park SA

3 2 2

Welcome to this stunning mid-century modern classic, a rare gem offering both charm and potential. Perfectly positioned with breathtaking city views, this exquisite 3 bedroom home is set on approximately 763 sqm of prime land.

Key Features:

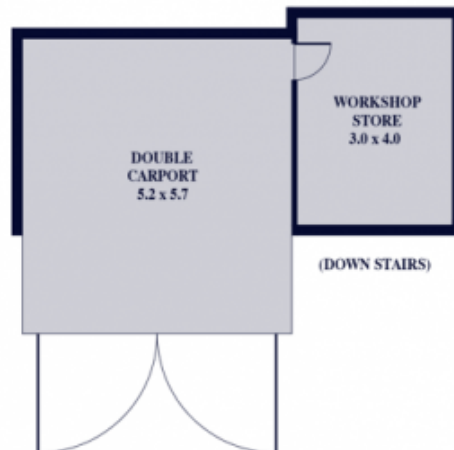
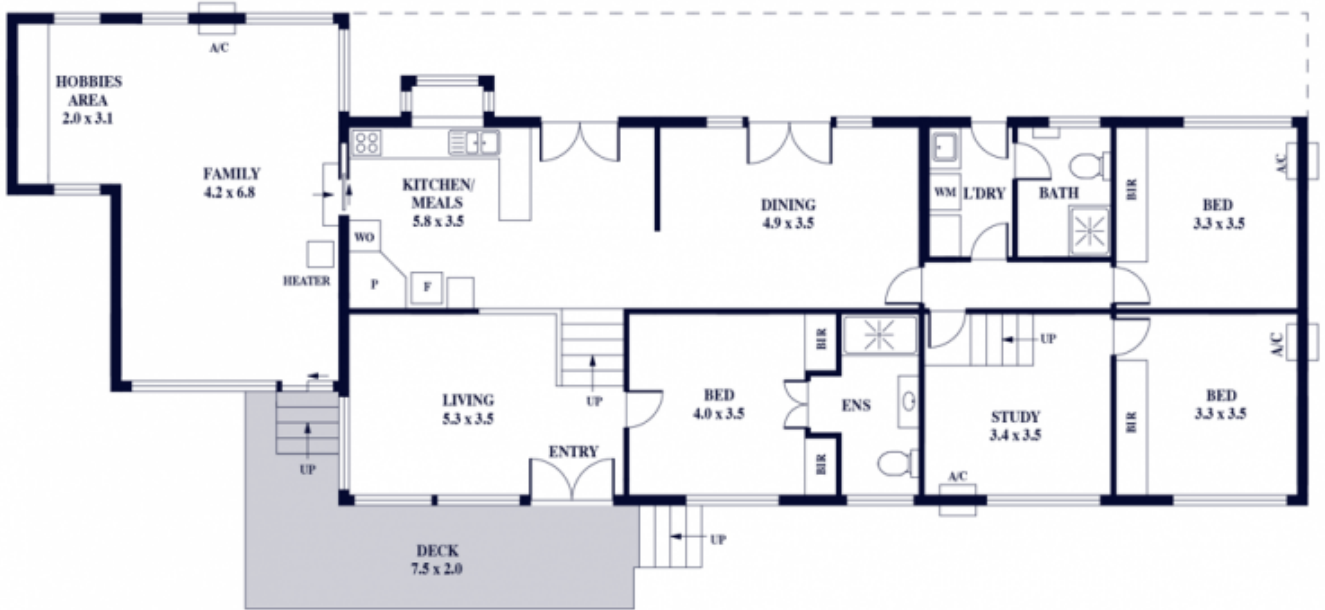
- ?Architectural Charm: Experience the unique appeal of timber-panelled walls and thatched ceilings, creating a warm and inviting atmosphere.
- ?Spacious Living: Enjoy three generous living areas, providing ample space for relaxation and entertainment.
- ?Main Bedroom: The master suite features a built-in robe, ceiling fan, and a private ensuite bathroom, ensuring a

[For full version visit the website](https://www.alexanderrealestate.com.au/sale/sa/eastern-suburbs/wattle-park/residential/house/8131661)

Type : House
Price : Price Guide: \$1,225,000
Land Size : 763 sqm
View : <https://www.alexanderrealestate.com.au/sale/sa/eastern-suburbs/wattle-park/residential/house/8131661>



Penny Riggs
0439669965



Internal - 181.2 SQM
 External - 65.1 SQM
 Total - 246.3 SQM

