



## 65a Godfrey Terrace Erindale SA

3 2 2

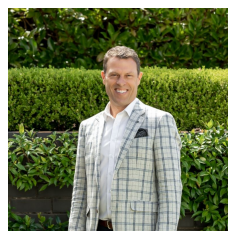
This delightful home offers comfort, convenience, and style. It is ideal for downsizers or those seeking a low-maintenance lifestyle in this brilliant location.

The home features a flexible floor plan with three bedrooms, two bathrooms, two living areas and automated front gates. The outdoor area includes a beautiful courtyard garden with a covered entertaining space, perfect for year-round enjoyment.

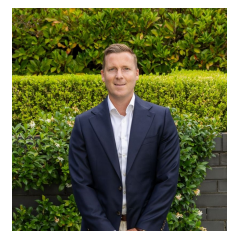
Upon entry, you are greeted by a tiled foyer that leads to a formal dining or living room. The open-plan kitchen, meals, and family area are positioned nearby, seamlessly flowing through French doors to the paved, covered patio. The modern kitchen boasts sleek granite benchtops, an island

**Type** : House  
**Price** : Offers close: Tuesday, 25 March at 11am  
**Land Size** : 393 sqm  
**View** : <https://www.alexanderrealestate.com.au/sale/sa/eastern-suburbs/erindale/residential/home/8275355>

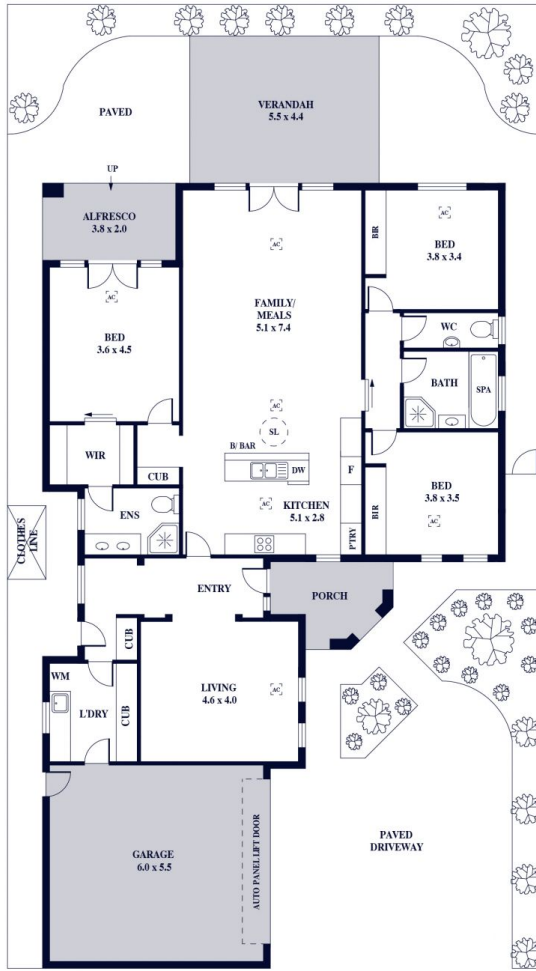
[For full version visit the website](#)



**Steve Alexander**  
0411 755 985



**Jake Tidmarsh**  
0411 221 273



Internal - 209.3 SQM  
 External - 15.7 SQM  
 Total - 225.0 SQM

